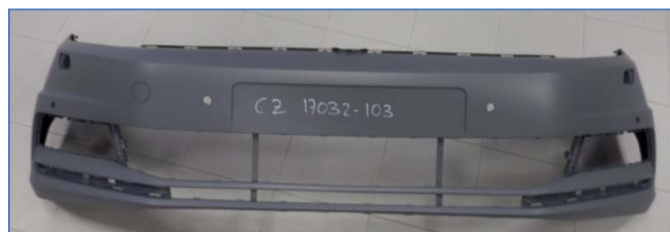


DATOS DE LA PIEZA A CERTIFICAR: PART DESCRIPTION	
Denominación: PARAGOLPES DELANTERO CON PRIMER Name: Front bumper with primer	
Adaptable a: VOLKSWAGEN TOURAN (15) Adaptable to	
Fabricado por: PHIRA COMPONENTES AUTOMOCIÓN Manufactured by	
Ref. fabricante: TOU-15200 Manufacturer reference	Ref. Constructor: 5TA807217GRU O.E.M. reference
Nº Certificación: 17 029 17 05 Certification number	



<p>Valorando lo resultados obtenidos en los ensayos y verificaciones a los que ha sido sometida la pieza de recambio, el dictamen final es: Having analyzed the results of the test to which spare part has been subjected, the final decision is:</p>	
<p>RESULTADO DE LA PIEZA Spare part result</p>	
<input checked="" type="checkbox"/>	<p>CERTIFICADA Approved</p>
<input type="checkbox"/>	<p>NO CERTIFICADA Fail</p>

1. CONTROL DE MATERIAL MATERIAL CONTROL		
ENSAYO Test	RESULTADO Result	OBSERVACIONES OBSERVATION
Tipo de material Material	PP+EPDM	Cumple requisitos CZ It is according to requirements of CZ
Espesor de la pieza (mm) Part thickness	Conforme Approved	Cumple requisitos CZ It is according to requirements of CZ
Espesor armazón (mm) Frame thickness	NP	
Espesor cierre (mm) Fastener thickness	NP	
Masa de la pieza (Kg) Weight	3,269	Cumple requisitos CZ It is according to requirements of CZ Report (Weight_CZ-17029)
Embutición (mm) Ball punch deformation test	NP	
Prestaciones Mecánicas Impact resistance	Conforme Approved	Cumple requisitos CZ It is according to requirements of CZ Report (CZ-17029-101)
Envejecimiento Acelerado Colour resistance	NP	
Resistencia al calor (%) Heat resistance	Conforme Approved	Cumple requisitos CZ It is according to requirements of CZ
Resistencia combustible (%) Fuel resistance	Conforme Approved	Cumple requisitos CZ It is according to requirements of CZ
CALIFICACIÓN DEL CONTROL DEL MATERIAL Test result		CONFORME APPROVED

2. CONTROL DE LA PIEZA (ADAPTABILIDAD E INSPECCIÓN PREVIA) PART CONTROL (ADAPTABILITY PREVIOUS INSPECTION)		
ENSAYO Test	RESULTADO Result	OBSERVACIONES OBSERVATION
Inspección previa Previous inspection	Conforme Approved	Cumple requisitos CZ It is according to requirements of CZ Report 17032IP-AD01-HR02
Tiempo de montaje (u.t) Assembly time	10,31	Cumple requisitos CZ It is according to requirements of CZ Report 17029TM01-HR01
Proceso de trabajo Assembly process	Similar a constructor Similar to O.E.M.	Cumple requisitos CZ It is according to requirements of CZ Report 17029IP-AD01-HR01
Montaje de accesorios Adaptability of Accessories	Conforme Approved	Cumple requisitos CZ It is according to requirements of CZ Report 17029IP-AD01-HR01
Holguras Gaps	Similar a constructor Similar to O.E.M.	Cumple requisitos CZ It is according to requirements of CZ Report 17029HG01-HR01
Paralelismos Parallelism	Similar a constructor Similar to O.E.M.	Cumple requisitos CZ It is according to requirements of CZ Report 17029IP-AD01-HR01
Alineaciones Alignment	Similar a constructor Similar to O.E.M.	Cumple requisitos CZ It is according to requirements of CZ Report 17029IP-AD01-HR01
Funcionalidad Functional features	Conforme Approved	Cumple requisitos CZ It is according to requirements of CZ Report 17029IP-AD01-HR01
CALIFICACIÓN DEL CONTROL DE LA PIEZA Test result		CONFORME APPROVED

3. CONTROL DE RECUBRIMENTOS COATING CONTROL		
ENSAYO Test	RESULTADO Result	OBSERVACIONES OBSERVATION
Espesor, e_e (μm) Thickness	NP	
Dureza Hardness	NP	
Embutición (mm) Ball punch deformation test	NP	
Corrosión roja (nº horas) Corrosion resistance	NP	
Adherencia Adhesion	Conforme Approved	Cumple requisitos CZ It is according to requirements of CZ
Resistencia al lavado alta presión High pressure resistance	Conforme Approved	Cumple requisitos CZ It is according to requirements of CZ Report CZ-17029-101
Resistencia del recubrimiento a los disolventes Solvent resistance	Conforme Approved	Cumple requisitos CZ It is according to requirements of CZ
CALIFICACIÓN DEL CONTROL DE RECUBRIMENTOS Test result		CONFORME APPROVED

4. CONTROLES ADICIONALES ADDITIONAL CONTROL		
ENSAYO Test	RESULTADO Result	OBSERVACIONES OBSERVATION
Material en sistemas de unión Material in joining parts	NP	
Materiales de subestructuras Reinforcement material	NP	
Cumple funcionalidad Functional features	NP	
Área soldada (mm ²) Welded area	NP	
Distancia (mm) entre puntos soldadura Distance between spots weld	NP	
Puntos soldadura defectuosos Quality of sports weld	NP	
Formas geométricas Geometrical shape	Conforme Approved	Sin partes puntiagudas, ni cortantes, ni susceptibles de enganches Without sharp and pointed parts
Orientación superficies laterales Lateral surface orientation	Conforme Approved	Vuelta al exterior Turn over to external side
CALIFICACIÓN DE LOS CONTROLES ADICIONALES Test result		CONFORME APPROVED

5. COMPORTAMIENTO MECÁNICO EN LOS SISTEMAS DE UNIÓN

MECHANICAL BEHAVIOUR IN SYSTEMS OF UNION

5.1 CAPÓS

Bonnet

ENSAYO Test	RESULTADO Result	OBSERVACIONES OBSERVATION
Diferencia de retroceso (cm) Diference in backward movement		
Forma de plegado Folded shape		
Adhesivo y sellante Mastic behavior		
Cierre Fastener behavior		
CALIFICACIÓN EN LOS SISTEMAS DE UNIÓN Test result		NO PROCEDE NOT APPLICABLE

5.2 PARAGOLPES

Bumper

ENSAYO Test	RESULTADO Result	OBSERVACIONES OBSERVATION
Crash-Test frontal Frontal crash-test	Similar a constructor Similar to O.E.M.	Cumple requisitos CZ It is according to requirements of CZ
Crash-Test oblicuo Lateral crash-test	Similar a constructor Similar to O.E.M.	Cumple requisitos CZ It is according to requirements of CZ
CALIFICACIÓN EN LOS SISTEMAS DE UNIÓN Test result		CONFORME APPROVED

ANEXO 1 – REPORTAJE FOTOGRÁFICO DE LA ADAPTABILIDAD

ANNEX 1 – ADAPTABILITY PHOTO DOCUMENTATION

Muestra Constructor
 O.E.M. Part



Muestra Fabricante
 Spare Part





